

Microsoft Dynamics 365 Business Central BC14

Extended Manufacturing Registration

Table of Contents

Introduction..... 3

Requirements 3

Item Charge Assignment on production (Output)..... 4

Registration on finished production orders 5

 Create Whse. Pick..... 6

 Pick Lines 7

 Production Journal 7

Introduction

Extended Manufacturing Registration contains two functionalities

- Item Charge assignment to production (Output)
- Registration on finished production orders

Requirements

This product can be installed as an extension in Microsoft Dynamics 365 Business Central BC14

It is recommended to use the newest Cumulative Update.

It is possible to see the Runtime version in Help – About Microsoft Dynamics.

Item Charge Assignment on production (Output)

It is possible to assign Item Charge to an Output entry. Item Charge assignment is often used to apply cost from freight or similar cost, which companies often receive late, to a sales order. This is also referred to as landed cost.

Unfortunately, standard Navision do not have functionality for production. With this module we have added this possibility to assign cost that is maybe not directly linked to the production (e.g. freight).

In Navision, cost price of a manufactured product consists of contributions from registrations of consumed items and time consumed by operators and machines.

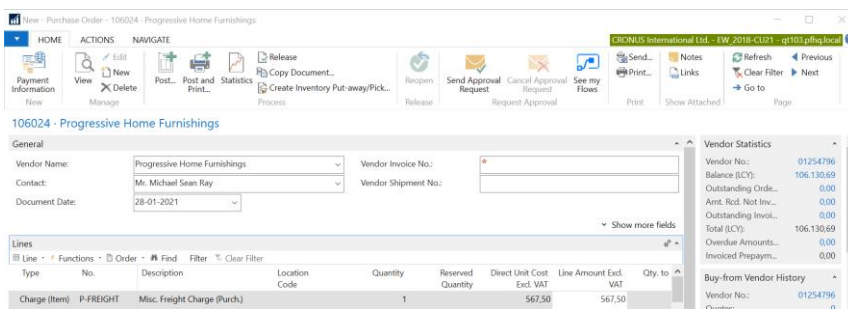
In the real world, however, costs can often arise that are not part of neither route nor component list, but which one wishes to include in the actual cost of the finished product. Special situations can appear during production that makes it necessary to spend extra cost that are not part of the BOM but we would like to apply this cost to the production. This could be for urgent transport of materials, counseling etc.

In standard Dynamics NAV, this can be handled to a certain extent on an ongoing order by adding materials to the component list and operations in the route.

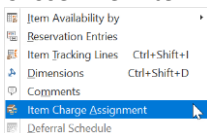
Often this is not practical in practice, and on the finished production order you are completely cut off from adding changes to the production order.

Costs are entered via purchase invoice or purchase order using Charge (Item) fee. In the Item Charge Assignment cost is applied to the unit or units of finished goods from production orders that you wish to charge.

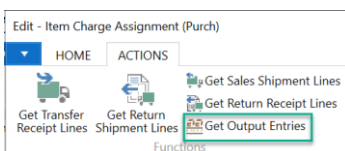
Example.



Chose Line – Item Charge Assignment



In the Item Charge Assignment chose Get Output Entries



You can use the Suggest Item Charge Assignment to spread the cost on assignment lines you have created. If you only have one line then all cost will be allocated to this this line no matter what calculation method you use in the Suggest Item Charge Assignment.

Applies-to Doc. Type	Applies-to Doc. No.	Applies-to Doc. Line...	Item No.	Description	Qty. to Assign	Qty. Assigned	Amount to Assign	Gross Weight	Unit Volume
Production O...		325	1000		1		567,50		

Posting Date	Item Ledger Entry Type	Entry Type	Adj...	Document Type	Document No.	Item Charge No.	Description	Sales Amount (Actual)	Cost Amount (Expected)	Cost Amount (Actual)	Cost Amount (Non-Invntbl.)	Cost Posted
10-09-2021	Output	Direct Cost	<input type="checkbox"/>		1011001			0,00	1.752,97	0,00	0,00	0
10-09-2021	Output	Direct Cost	<input type="checkbox"/>		1011001			0,00	-1.752,97	4.547,45	0,00	0
10-09-2021	Output	Direct Cost	<input type="checkbox"/>		1011001			0,00	0,00	-9,80	0,00	0
28-01-2021	Purchase	Direct Cost	<input type="checkbox"/>	Purchase Inv...	108036	P-FREIGHT	Misc. Freight Charge (Purch.)	0,00	0,00	368,21	0,00	0
10-09-2021	Output	Variance	<input type="checkbox"/>		1011001			0,00	0,00	-2.422,48	0,00	0
10-09-2021	Output	Variance	<input type="checkbox"/>		1011001			0,00	0,00	-372,00	0,00	0
10-09-2021	Output	Variance	<input type="checkbox"/>		1011001			0,00	0,00	9,80	0,00	0
28-01-2021	Purchase	Variance	<input type="checkbox"/>	Purchase Inv...	108036			0,00	0,00	-368,21	0,00	0

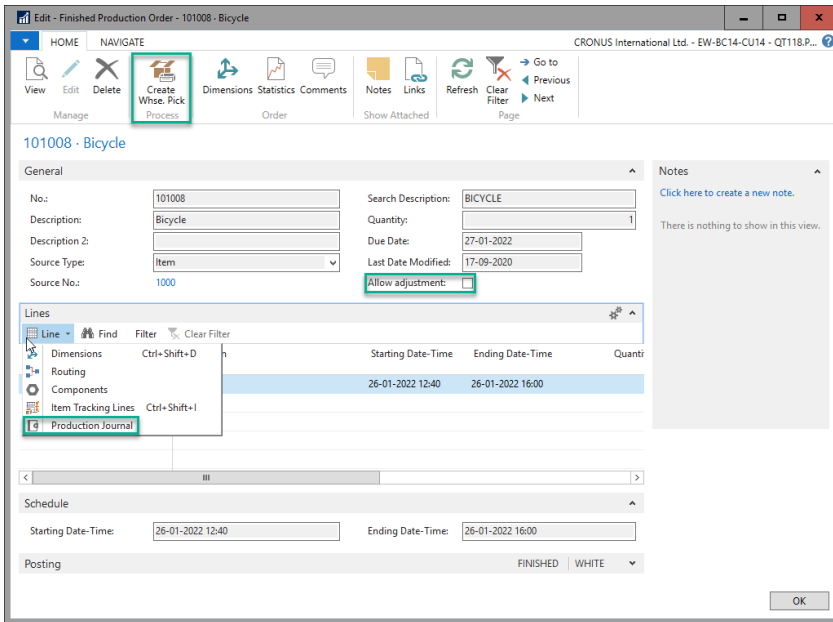
Through the setup of different Item Charge fees and associated accounting setup it is possible to control how these costs are posted in the chart of account. Besides seeing the value entry on the output entry, we can see all entries for a specific Item Charge directly on the Item Charge

No.	Description	Gen. Prod. Posting ...	Tax Group Code	VAT Prod. Posting ...	Search Description
B-FREIGHT	Freight Charge (B-Spedition)	SERVICES		VAT25	FREIGHT CHA...
P-ALLOWANCE	Purchase Allowance	SERVICES		VAT25	PURCHASE A...
P-FREIGHT	Misc. Freight Charge (Purch.)	SERVICES		VAT25	MISC. FREIGH...
P-RESTOCK	Purchase Restock Charge	SERVICES		VAT25	PURCHASE R...
S-ALLOWANCE	Sales Allowance	SERVICES		VAT25	SALES ALLO...
S-FREIGHT	Misc. Freight Charges (Sales)	SERVICES		VAT25	MISC. FREIGH...
S-RESTOCK	Sales Restock Charge	SERVICES		VAT25	SALES RESTO...

Cost per Unit (ACY)	Item No.	Gen. Bus. Posting ...	Gen. Prod. Posting ...	Source Type	Source No.	External Docume...	Order Type	Valu... By A...	Item Ledger Entry No.	Capacity Ledger Ent...	Entry No.
0,00	1000	EXPORT	SERVICES	Vendor	01254796	454354365	Production		325	0	459

Registration on finished production orders

This functionality is used to correct posting on production. This could be missing consumption, wrong batch number, wrong consumption etc



Allow adjustment

This field opens up for changes on production order. You will be allowed to modify and add component lines. It is also required for access to Production Journal (Posting).

We recommend to setup Changelog for production order

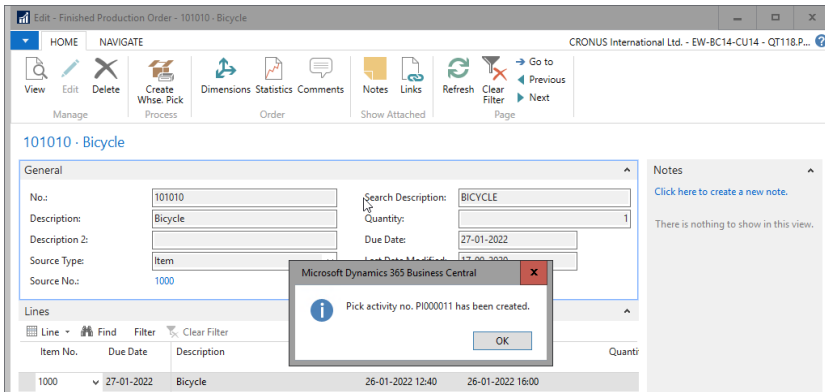
Create Whse. Pick

On the finished production order it is possible to create pick on the same conditions as on the released production orders. If there are remaining quantity for some of the components and Location for these lines are setup for pick. Order 101010 was finished before everything was picked

The screenshot shows the 'Edit - Prod. Order Components - 101010 1000 Bicycle' window. The 'Remaining Quantity' column in the table is highlighted in green.

Item No.	Due Date	Description	Quantity per	Unit of Measur...	Flushing Method	Expected Quantity	Remaining Quantity	Bin Code	St...
1100	26-01-2022	Front Wheel	1	PCS	Manual	1	1	W-07-0002	No
1200	26-01-2022	Back Wheel	1	PCS	Manual	1	1	W-07-0002	No
1300	26-01-2022	Chain Assy	1	PCS	Manual	1	1	W-07-0002	No
1400	26-01-2022	Mudguard front	1	PCS	Manual	1	1	W-07-0002	No
1450	26-01-2022	Mudguard back	1	PCS	Manual	1	1	W-07-0002	No
1500	26-01-2022	Lamp	1	PCS	Manual	1	1	W-07-0002	No
1600	26-01-2022	Bell	1	PCS	Manual	1	1	W-07-0002	No
1700	26-01-2022	Brake	1	PCS	Manual	1	1	W-07-0002	No
1800	26-01-2022	Handlebars	1	PCS	Manual	1	1	W-07-0002	No
1850	26-01-2022	Saddle	1	PCS	Manual	1	1	W-07-0002	No
1900	26-01-2022	Frame	1	PCS	Manual	1	1	W-07-0002	No

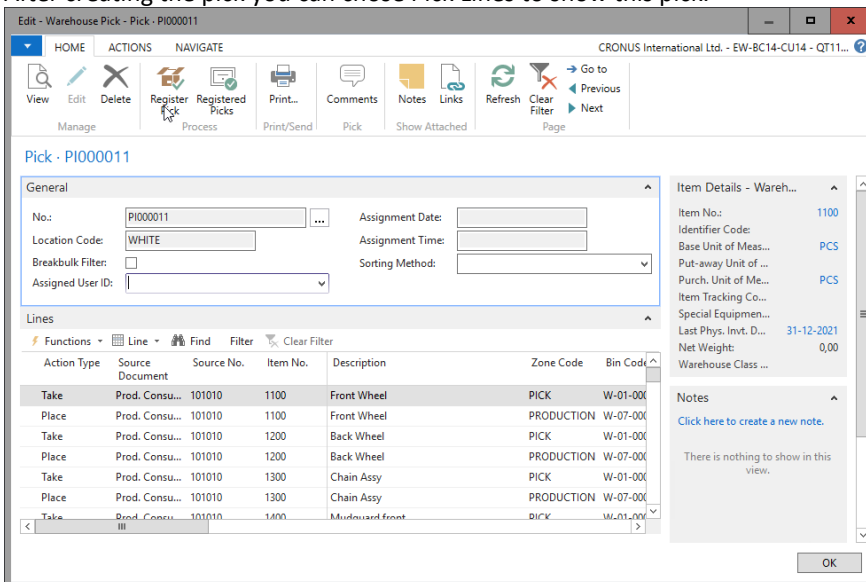
We can create pick for the missing pick



We could also have a situation where we had picked and consumed the wrong batch. Then we could reverse the wrong consumed batch and the pick and consume the right batch.

Pick Lines

After creating the pick you can chose Pick Lines to show this pick.



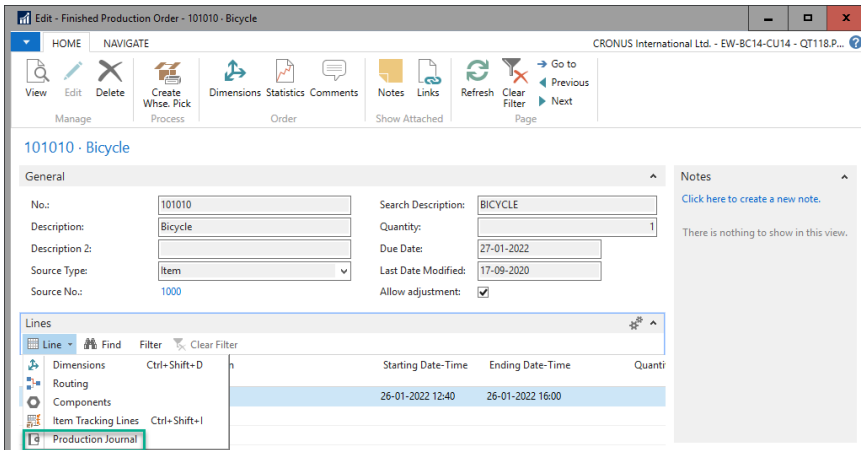
You can also find this pick using warehouse menu



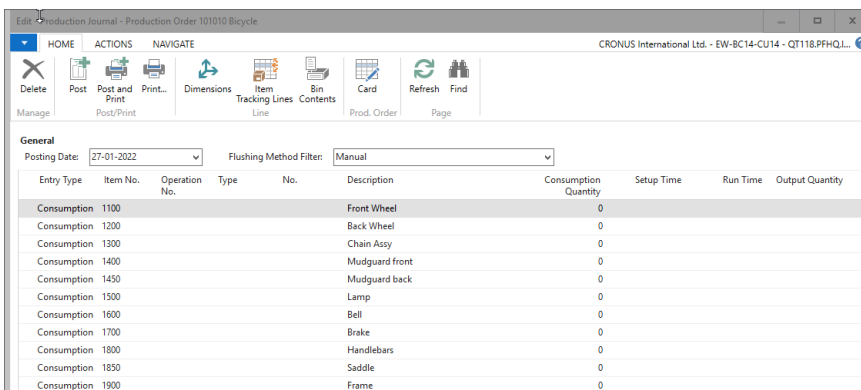
Production Journal

On the finished production order, we have added Production Journal where it is possible to post changes to your production order. If you use warehouse management you are required to pick items before you can consume these. You can reverse consumption and output, you can post consumption and output and you can post capacity. It works as on the released production order.

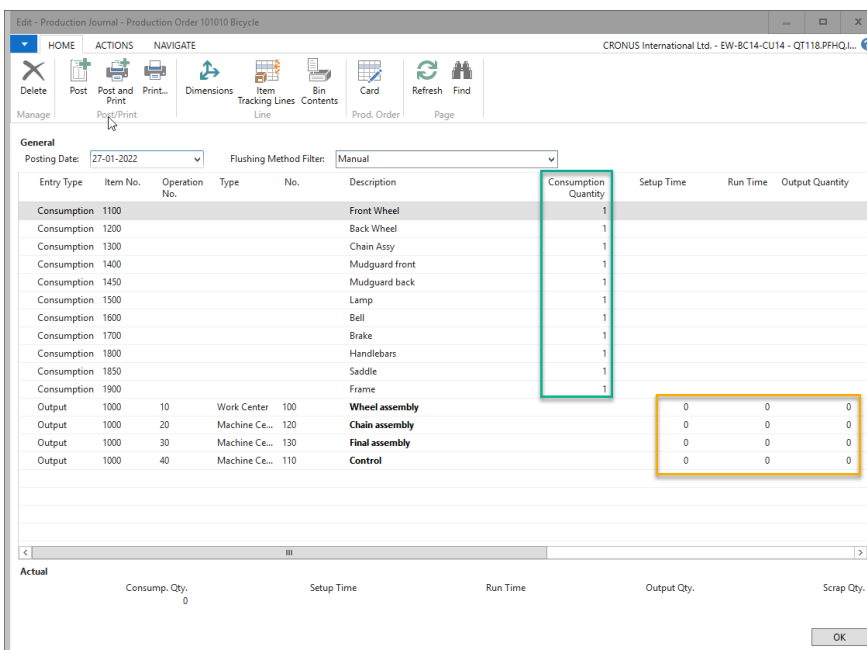
It is not possible to reverse all output (if we do so then WIP account cannot be emptied)



If pick is required and we haven't registered the pick Consumption Quantity in this journal will be zero (just as if you would post Production Journal on a released production order)



After registering the pick, the production journal shows what can be posted (marked green)



If we need to post capacity or output we can also do this (marked yellow)

Edit - Production Journal - Production Order 101010 Bicycle

HOME ACTIONS NAVIGATE

Delete Post Post and Print... Dimensions Item Tracking Lines Bin Contents Card Refresh Find

Manage Post/Print Line Prod. Order Page

General
 Posting Date: 27-01-2022 Flushing Method Filter: Manual

Entry Type	Item No.	Operation No.	Type	No.	Description	Consumption Quantity
Consumption	1100				Front Wheel	1
Consumption	1200				Back Wheel	1
Consumption	1300				Chain Assy	1
Consumption	1400				Mudguard front	1
Consumption	1450				Mudguard back	1
Consumption	1500					1
Consumption	1600					1
Consumption	1700					1
Consumption	1800					1
Consumption	1850					1
Consumption	1900				Frame	1

Microsoft Dynamics 365 Business Central
 The journal lines were successfully posted.
 OK

After posting the journal we can see the entries on the production order

View - Item Ledger Entries - Finished Production Order 101010 Bicycle

HOME ACTIONS NAVIGATE

Dimensions Set Dimension Filter... Value Entries Show as List Show as Chart Notes Links Refresh Clear Filter Find

Entry View Show Attached Page

Item Ledger Entries Filter: Production - 101010

Posting Date	Entry Type	Document Type	Document No.	Item No.	Description	Location Code	Quantity	Invoiced Quantity	Remaining Quantity	Sales Amount (Actual)	Cost Amount (Actual)	Cost Amount (Non-Invtbl.)	Open	Order Type	Entry No.
27-01-2022	Consumption	101010	1000	1900	Frame	WHITE	-1	-1	0	0,00	-15,70	0,00	<input type="checkbox"/>	Production	427
27-01-2022	Consumption	101010	1000	1850	Saddle	WHITE	-1	-1	0	0,00	-7,20	0,00	<input type="checkbox"/>	Production	426
27-01-2022	Consumption	101010	1000	1800	Handlebars	WHITE	-1	-1	0	0,00	-2,12	0,00	<input type="checkbox"/>	Production	425
27-01-2022	Consumption	101010	1000	1700	Brake	WHITE	-1	-1	0	0,00	-9,77	0,00	<input type="checkbox"/>	Production	424
27-01-2022	Consumption	101010	1000	1600	Bell	WHITE	-1	-1	0	0,00	-2,70	0,00	<input type="checkbox"/>	Production	423
27-01-2022	Consumption	101010	1000	1500	Lamp	WHITE	-1	-1	0	0,00	-5,20	0,00	<input type="checkbox"/>	Production	422
27-01-2022	Consumption	101010	1000	1450	Mudguard back	WHITE	-1	-1	0	0,00	-3,90	0,00	<input type="checkbox"/>	Production	421
27-01-2022	Consumption	101010	1000	1400	Mudguard front	WHITE	-1	-1	0	0,00	-3,90	0,00	<input type="checkbox"/>	Production	420
27-01-2022	Consumption	101010	1000	1300	Chain Assy	WHITE	-1	-1	0	0,00	-13,16	0,00	<input type="checkbox"/>	Production	419
27-01-2022	Consumption	101010	1000	1200	Back Wheel	WHITE	-1	-1	0	0,00	-129,68	0,00	<input type="checkbox"/>	Production	418
27-01-2022	Consumption	101010	1000	1100	Front Wheel	WHITE	-1	-1	0	0,00	-129,67	0,00	<input type="checkbox"/>	Production	417
27-01-2022	Output	101010	1000	1000	Bicycle	WHITE	1	0	1	0,00	0,00	0,00	<input checked="" type="checkbox"/>	Production	416

Close